



1. The gauge comes as a complete assembly from the factory. Pressure gauge, bracket and air line fitting are all pre-assembled for your convenience.



2. Use the existing 1/4" hole in the underside of the frame, in front of the battery box, to mount the pressure gauge.



3. Use the 1/4" air line supplied in the kit and simply push it into the "push to connect" fitting that's already installed as part of the pressure gauge assembly.



4. Route the 1/4" line from the gauge, rearward through the large hole in the frame and connect to the distribution manifold. You will need to remove the plug and insert the fitting supplied in the kit. Cut the 1/4" air line to length and connect.

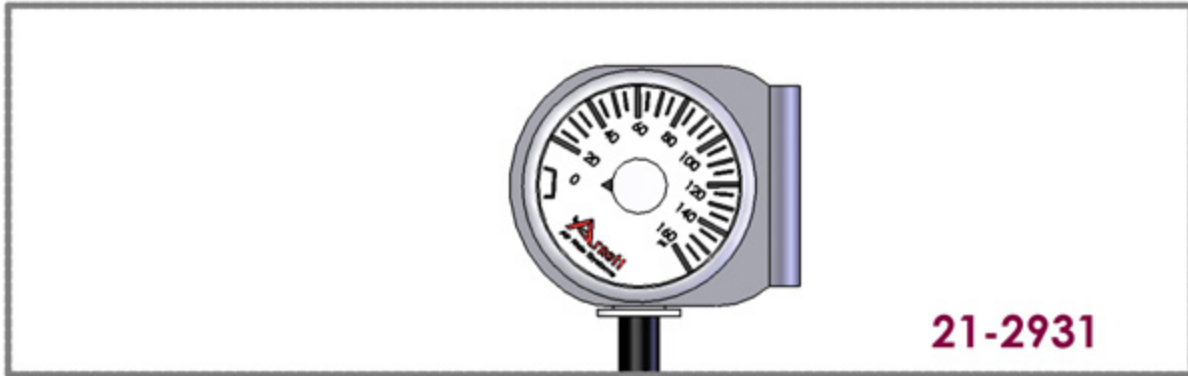
SCHEMATIC ON REVERSE SIDE

### PARTS LIST

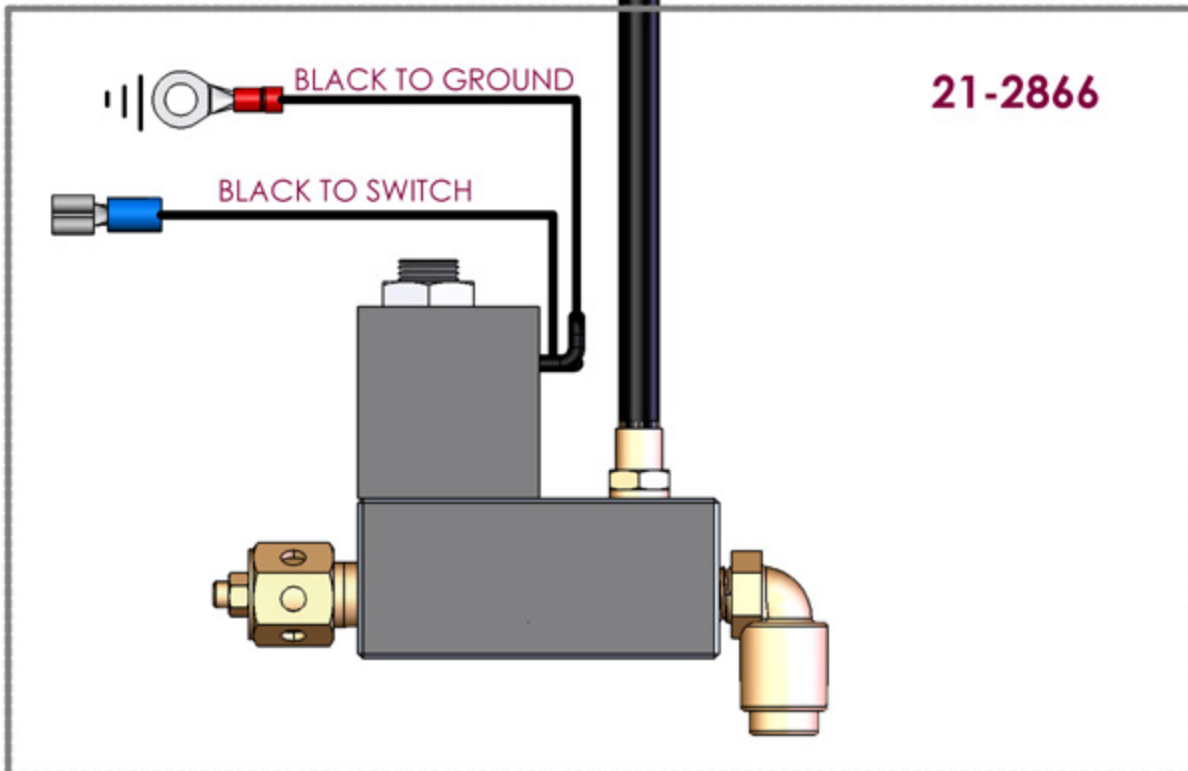
Gauge/Bracket Assembly	21-2931	1
1/4" Line	29-2627	3 ft.
Push to connect fitting	29-2633	1

# Installation Manual

## PRESSURE GAUGE #21-2931 HARLEY-DAVIDSON® TOURING MODELS 1980-PRESENT



21-2931



21-2866



**PROPRIETARY AND CONFIDENTIAL**  
THE INFORMATION CONTAINED IN THIS DRAWING IS THE SOLE PROPERTY OF ARNOTT, INC. ANY REPRODUCTION IN PART OR AS A WHOLE WITHOUT THE WRITTEN PERMISSION OF ARNOTT, INC. IS PROHIBITED.

DIMENSIONS ARE IN INCHES	
TOLERANCES:	
FRACTIONAL: ±	
ANGULAR: MACH ± BEND ±	
TWO PLACE DECIMAL ±	
THREE PLACE DECIMAL ±	
MATERIAL	FINISH
NEXT ASSY	USED ON
APPLICATION	DO NOT SCALE DRAWING

NAME	DATE
DRAWN KMD	04/03/08
CHECKED	
ENG APPR.	
MFG APPR.	
Q.A.	
COMMENTS:	

### MANIFOLD ASSEMBLY WITH GAUGE

SIZE	DWG. NO.	REV.
A		0
SCALE: NONE/WTGHT:	SHEET 1 OF 1	